

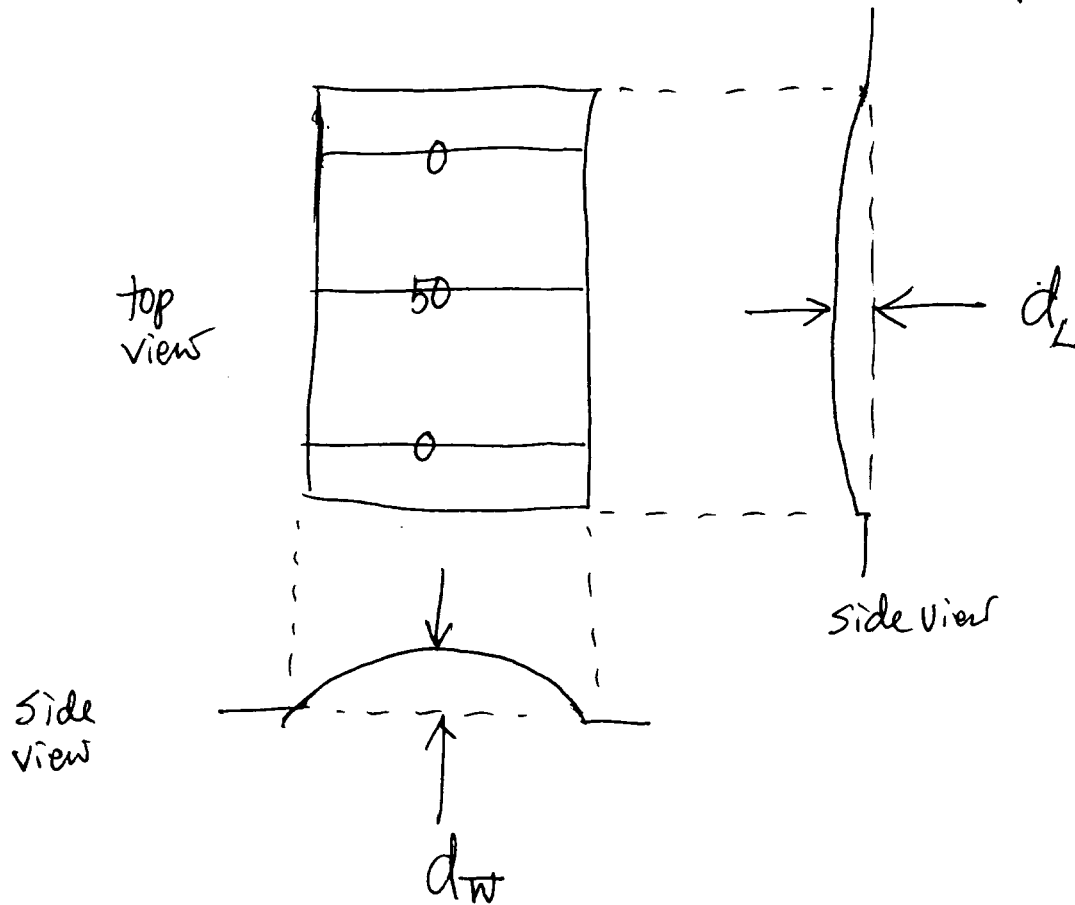
11/9/00  
©12.58

Larry, One more question about Tampa.

What is the sloping of the playing field?

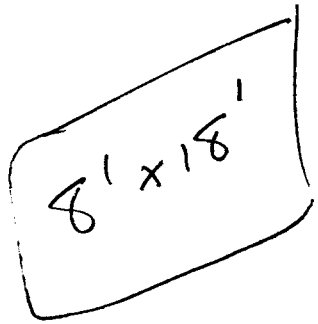
That is,

from a plane?



What are the values of  $d_L$  and  $d_w$ ?  
(assuming the field is sloping down ~~to~~ outward)

Takeo.



$$L = 220 \text{ yds} \text{ --- } 660 \text{ FT}$$

$$W = 150 \text{ yds} \text{ --- } ~~450 \text{ FT}~~ 450 \text{ FT}$$

RATIO 1:20

$$34 \text{ FT} \times 32 \text{ FT}$$

Cann Height ~ 60 FT

---

